

Bulletin 44: 11 March 2016

Allowance for a L2/3NP STMS to install Shoulder closures on a Level 2 Road Permanent Speed Limit (PSL) Under 65km/hr

Where works are contained completely within the Shoulder of a Level 2 Road, PSL under 65km/hr, and no trafficable lanes are effected, a L2/3 NP STMS may install, monitor and remove a site provided that the L2/3 NP STMS has been formally competency checked, by the organisation they are working for, and that organisation is confident that they are of a level of skill and competency to undertake the operation they are being given.

No Trafficable lanes may have capacity reduced, on a Level 2 Road PSL under 65km/hr, by a L2/3 NP STMS at time of installation, removal or during works unless a L2/3 Practising STMS is present for the duration of the time that the works are effecting the trafficable lane.

All Shoulder closures installed by a L2/3NP STMS, on a Level 2 Road, PSL under 65km/hr, must be able to be installed from a protected position in front of a legally parked work vehicle fitted with the minimum of CoPTTM compliant, and operational, arrow board accessed from the Non traffic side of the vehicle. Alternatively the installation of equipment, on a Level 2 Road, PSL under 65km/hr, maybe undertaken from a footpath where a road environment constraint presents a position that enables equipment to be installed from a protected area, i.e. Kerb protrusion or build out, without entering a live lane or parking shoulder

A L2/3 NP STMS may install remove and modify any shoulder closure operation, on a Level 2 Road, PSL under 65km/hr, as long as all above conditions are met and no mobile operation is required during the installation or removal of the shoulder closure.

All above departures from CoPTTM must be documented in an accepted TMP prior to utilisation.

On behalf of the CTOC Temporary Traffic Management team

Simon Hodges / Temporary Traffic Management Coordinator

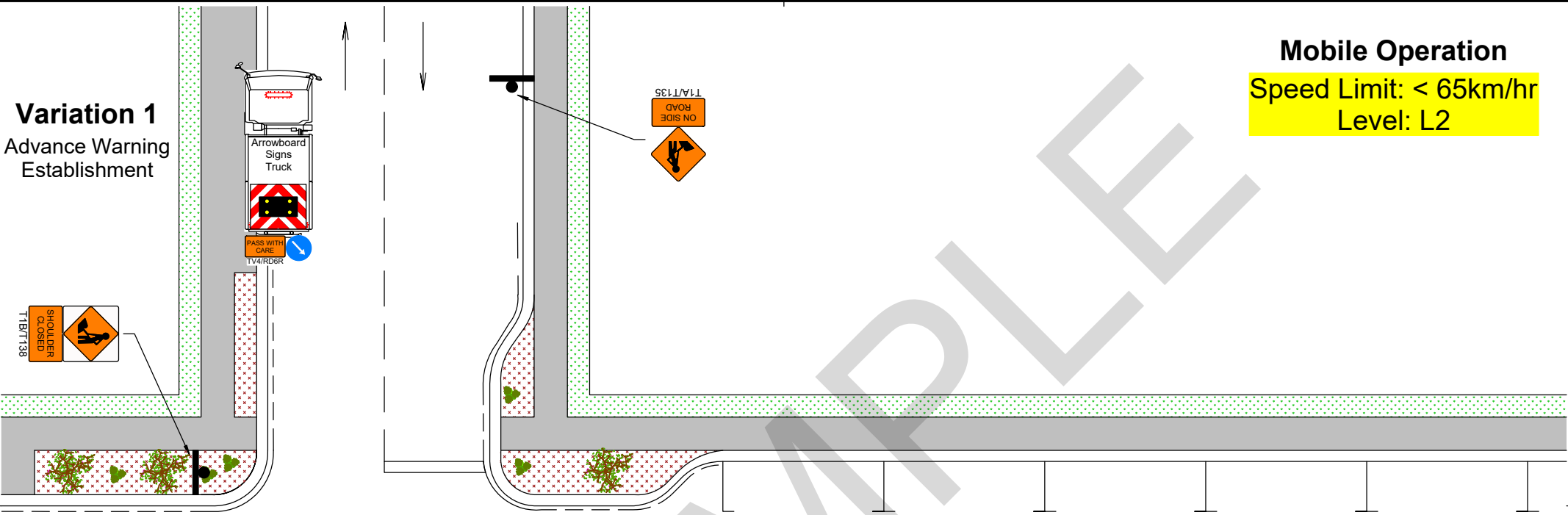
Christchurch Transport Operations Centre (CTOC)

A partnership of CCC, NZTA and Ecan

M: +64 27 497 0125 / DDI: +64 3 941 6232

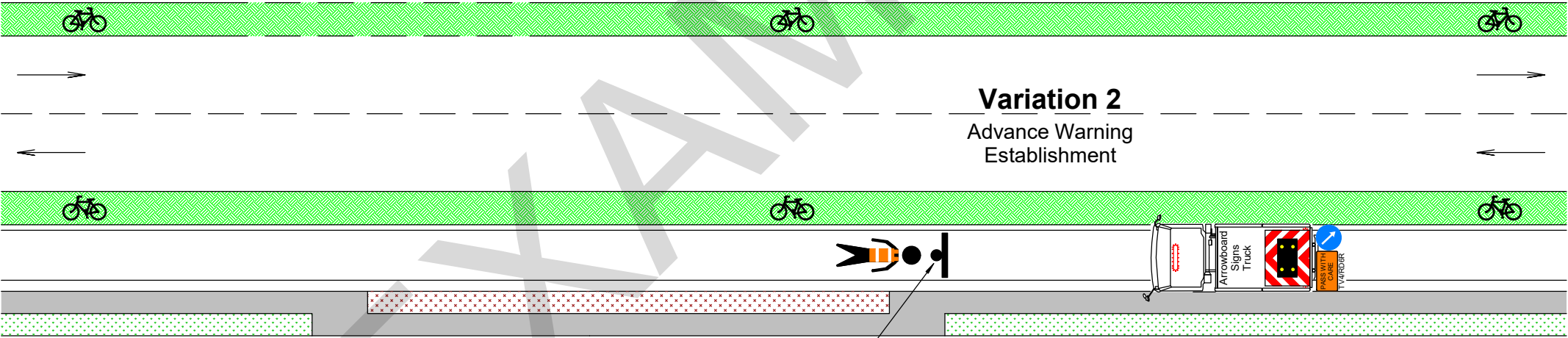
E: simon.hodges@tfc.govt.nz / w: www.tfc.govt.nz

Variation 1
Advance Warning Establishment



Mobile Operation
Speed Limit: < 65km/hr
Level: L2

Variation 2
Advance Warning Establishment



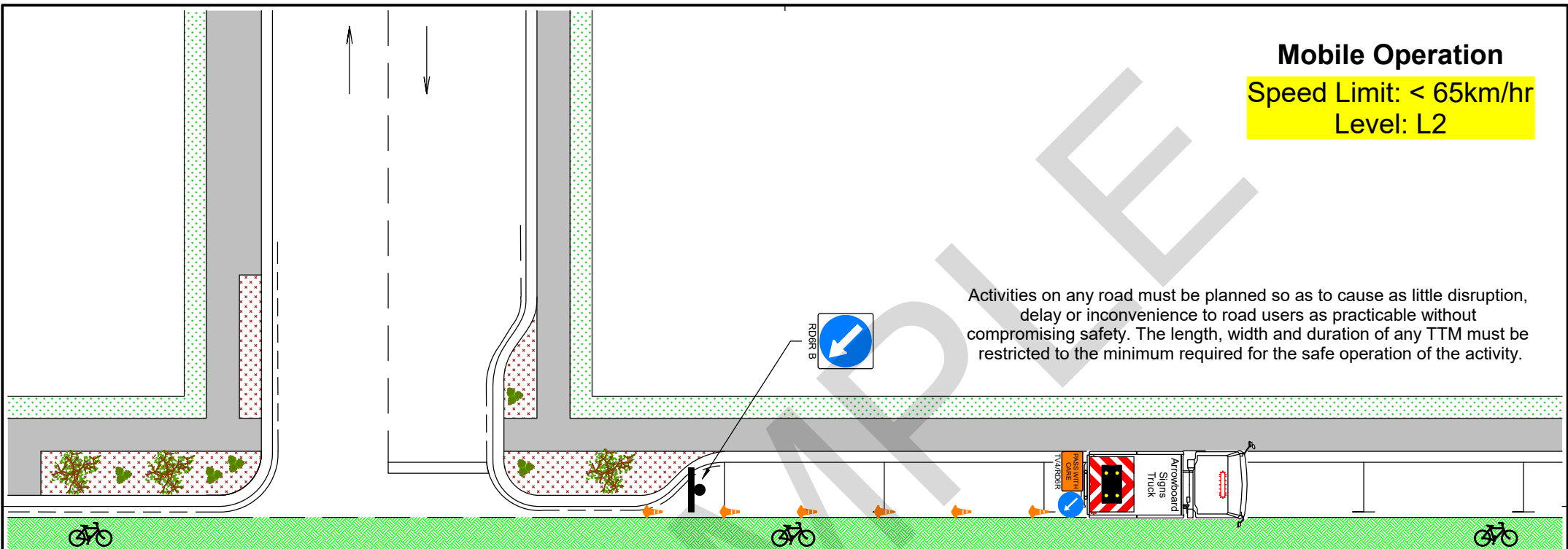
Activities on any road must be planned so as to cause as little disruption, delay or inconvenience to road users as practicable without compromising safety. The length, width and duration of any TTM must be restricted to the minimum required for the safe operation of the activity.

Trafficable lanes must not be impacted
– this includes the cycle lane

Reference No:	Level: L2	Operation: Mobile	Drawing: Advance Warning	Project: Mobile Operation
			Version: 1 Date: March 2016	Drawing Title: One Truck Setup
This drawing is not to any defined scale.				

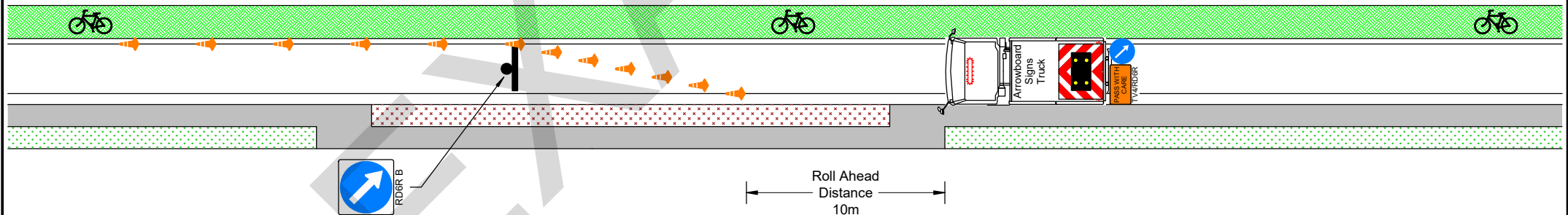
Mobile Operation
Speed Limit: < 65km/hr
Level: L2

Activities on any road must be planned so as to cause as little disruption, delay or inconvenience to road users as practicable without compromising safety. The length, width and duration of any TTM must be restricted to the minimum required for the safe operation of the activity.



Variation 1
 Site Establishment

Variation 2
 Site Establishment



Trafficable lanes must not be impacted
– this includes the cycle lane

Reference No:	Level: L2	Operation: Mobile	Drawing: Site Establishment	Project: Mobile Operation
			Version: 1 Date: March 2016	Drawing Title: One Truck Setup
This drawing is not to any defined scale.				