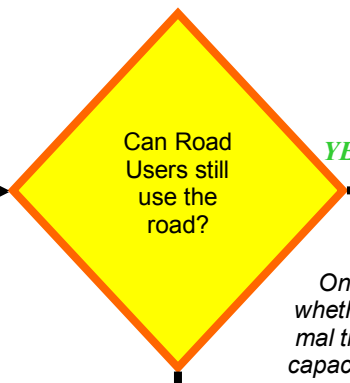
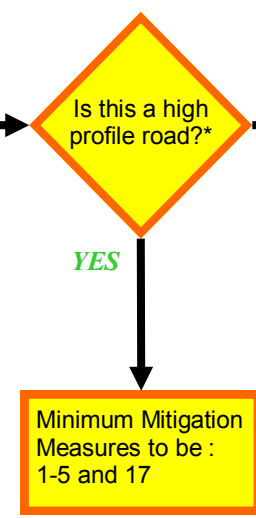
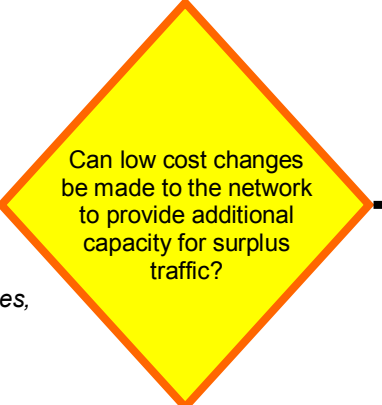


# Mitigation Measures

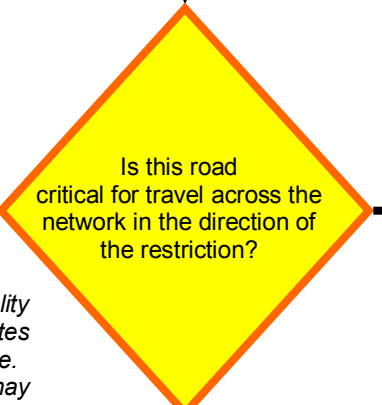
MajorWorks Flowchart identifies that Mitigation Measures required



*On alternative routes, check whether rerouted traffic plus normal traffic volumes are less than capacity, or that minor changes to signal timing would provide sufficient capacity.*



*Eg Intersection layout changes, Signal Phasing changes, Ped Xing closures, Side Road closures etc.*



*Consider the number, practicality and capacity of alternative routes available at the proposed date. Other worksites in operation may reduce the practicality of alternative routes.*

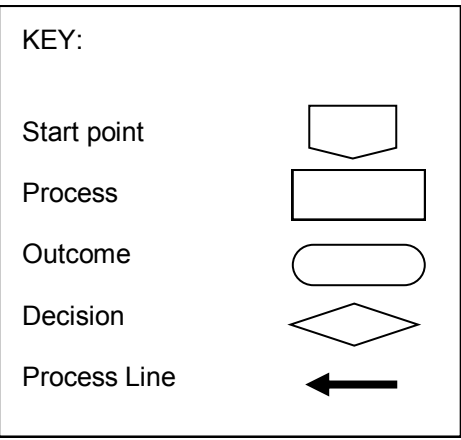
**LEVEL 1 MITIGATION**  
Impact on one Strategic route

**LEVEL 2 MITIGATION**  
Impact on more than one Strategic route

**LEVEL 3 MITIGATION**

**LEVEL 4 MITIGATION**

PURPOSE	MEASURE	RESPONSIBILITY
1. Summary of Project Info 2. Local Area Notification 3. Online Info 4. Regular Road User Warning 5. Regular Road User Warning 6. Key Stakeholder*** Warning	Project Notice Letterdrop / Door Knock TfC Website Icon + Details Preconditioning signage During Deployment signage Notification	Contractor Contractor CTOC Contractor Contractor Contractor
Mitigations 1-6 +		
7. Network Optimisation 8. Network Optimisation 9. Network Optimisation	Intersection Changes (Physical) Traffic Signal Changes (Operational) Controls on Alternative Routes	Contractor CTOC # Contractor
	#After discussion & agreement with contractor	
Mitigations 1-9 +		
10. Chch-wide Traveller Info 11. Chch-wide Traveller Info 12. Online Info 13. Online info 14. Media Awareness 15. Social Media Info 16. Social Media / Real Time Info 17. Key Stakeholder** Warning	Print Advertising Radio Travel Time Updates TfC Website Alert E-newsletter/Contractor website Media release CCC Facebook Update Twitter Feed Notification (Strengthened)	Contractor Contractor CTOC Contractor Contractor/CTOC CTOC CTOC CTOC
Mitigations 1-17 +		
18. Chch-wide Traveller Info 19. Online Info	Radio Advertising TfC Website Alert (Strengthened)	Contractor CTOC



Notes:  
 \* Mitigation measures 1-14 listed above are project specific. CTOC will lead mitigations 15+ where concurrent TMPs aggregate into wider network impacts.  
 \* Roads highly visible by influential stakeholders and general public e.g. Arterial roads beside Government agency offices, Main Road to Sumner.  
 \*\* Surplus Traffic Volume = Volume of traffic that will exceed the capacity of the worksite road.  
 \*\*\* Key Stakeholders = Emergency Services, CCC / NZTA Managers, Public Transport, Freight, AA, CCC Call Centre, NZTA 0800 HIGHWAYS (if State Highway involved).