

Mitigation Measures

MajorWorks Flowchart identifies that Mitigation Measures required

Is this a high profile road?*

Minimum Mitigation Measures to be : 1-5 and 17

Can Road Users still use the road?

On alternative routes, check whether rerouted traffic plus normal traffic volumes are less than capacity, or that minor changes to signal timing would provide sufficient capacity.

Will surplus** traffic volumes be easily catered for on nearby alternative routes?

Eg Intersection layout changes, Signal Phasing changes, Ped Xing closures, Side Road closures etc.

Can low cost changes be made to the network to provide additional capacity for surplus traffic?

No, and/or a shortfall in capacity still exists

Is this road critical for travel across the network in the direction of the restriction?

Consider the number, practicality and capacity of alternative routes available at the proposed date. Other worksites in operation may reduce the practicality of alternative routes.

LEVEL 1 MITIGATION
Impact on one Strategic route

LEVEL 2 MITIGATION
Impact on more than one Strategic route

LEVEL 3 MITIGATION

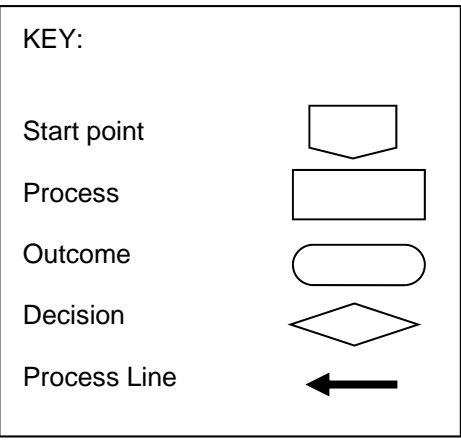
LEVEL 4 MITIGATION

PURPOSE	MEASURE	RESPONSIBILITY
1. Summary of Project Info	Project Notice	Contractor
2. Local Area Notification	Letterdrop / Door Knock	Contractor
3. Online Info	TfC Website Icon + Details	CTOC
4. Regular Road User Warning	Preconditioning signage	Contractor
5. Regular Road User Warning	During Deployment signage	Contractor
6. Key Stakeholder*** Warning	Notification	Contractor

Mitigations 1-6 +	MEASURE	RESPONSIBILITY
7. Network Optimisation	Intersection Changes (Physical)	Contractor
8. Network Optimisation	Traffic Signal Changes (Operational)	CTOC #
9. Network Optimisation	Controls on Alternative Routes	Contractor
	#After discussion & agreement with contractor	

Mitigations 1-9 +	MEASURE	RESPONSIBILITY
10. Chch-wide Traveller Info	Print Advertising	Contractor
11. Chch-wide Traveller Info	Radio Travel Time Updates	Contractor
12. Online Info	TfC Website Alert	CTOC
13. Online info	E-newsletter/Contractor website	Contractor
14. Media Awareness	Media release	Contractor/CTOC
15. Social Media Info	CCC Facebook Update	CTOC
16. Social Media / Real Time Info	Twitter Feed	CTOC
17. Key Stakeholder** Warning	Notification (Strengthened)	CTOC

Mitigations 1-17 +	MEASURE	RESPONSIBILITY
18. Chch-wide Traveller Info	Radio Advertising	CTOC
19. Online Info	TfC Website Alert (Strengthened)	CTOC



Notes:
 (1) For SCIRT projects also refer to SCIRT Stakeholder Management plan.
 (2) Mitigation measures 1-14 listed above are project specific. CTOC will lead mitigations 15+ where concurrent TMPs aggregate into wider network impacts.
 * Roads highly visible by influential stakeholders and general public e.g. Arterial roads beside Government agency offices, Main Road to Sumner.
 ** Surplus Traffic Volume = Volume of traffic that will exceed the capacity of the worksite road.
 *** Key Stakeholders = Emergency Services, CCC / NZTA Managers, CERA, Public Transport, Freight, AA, CCC Call Centre, NZTA 0800 HIGHWAYS (if State Highway involved).